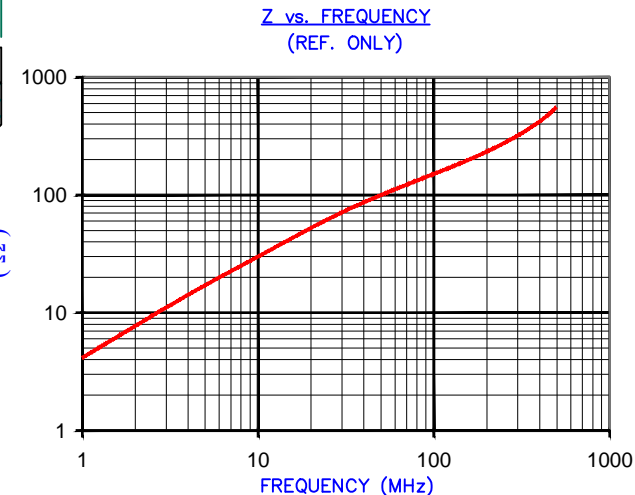


DETAIL "A"
CHAMFER
TYPICAL
SCALE=8:1

**UNCONTROLLED
DOCUMENT**

RoHS

IMPEDANCE (Z)			
Frequency	25 MHz	100 MHz	300 MHz
Nominal (REF)	60 Ω	150 Ω	310 Ω
Minimum	- Ω	120 Ω	- Ω



AGILENT E4991A Impedance/Material Analyzer
HP 16092A-Test Fixture

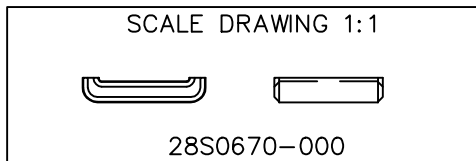
FERRITE CORE DIMENSIONS (SPEC): mm [in]

A	17.02 [.670]	+ 0.25 [.010]
B	12.50 [.492]	+ 0.20 [.008]
C	14.99 [.590]	+ 0.23 [.009]
D	3.40 [.134]	+ 0.15 [.006]
E	0.51 [.020]	+ 0.13 [.005]

WEIGHT/1000 3.61 kgs [7.95 Lbs]

NOTES: UNLESS OTHERWISE SPECIFIED

1. COSMETIC SPECIFICATION REFER TO WI-QA-038.



DIMENSIONS ARE IN mm[INCHES].				This print is the property of Laird Tech. and is loaned in confidence subject to return upon request and with the understanding that no copies shall be made without the written consent of Laird Tech. All rights to design or invention are reserved.			
REV	DESCRIPTION	DATE	INT				
G	UPDATE COMPANY LOGO	01/07/13	QIU	PROJECT/PART NUMBER: 28S0670-000		REV G	DRAWN BY: DJB
F	UPDATE COMPANY LOGO	08/29/07	TMB				
E	CHANGE PRINT FORMAT CHANGE Z SPECS AND ADD CURVE UPDATE TOLERANCES	07/03/03	TMB	DATE: 04/15/91		SCALE: 4 : 1	MATERIAL: FERRITE
D	UPDATE PRINT FOR ELECTRONIC DATABASE CHG. "C" TOL FROM .008 in. TO .009 in.	10/05/00	JAJ				
C	UPDATE PRINT FORMAT, CHG "C" MET. DIM.	02/16/98	I.S.	CAD # 28S0670-000-G		TOOL # S0670	
B	UPDATE P/N FOR NEW CATALOG	11/13/95	JBE				
A	ORIGINAL DRAFT	04/15/91	DJB				
REV	DESCRIPTION	DATE	INT				