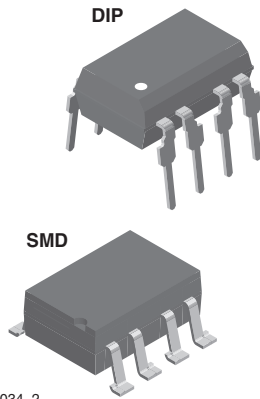
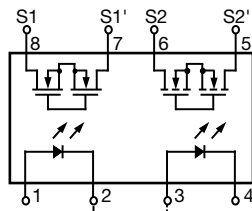
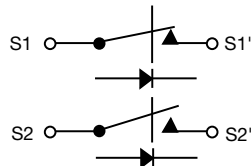




Dual 1 Form A/B, C Solid State Relay



i179034_2



FEATURES

- Current limit protection
- Isolation test voltage 3750 V_{RMS}
- Typical R_{ON} 20 Ω
- Load voltage 350 V
- Load current 150 mA
- High surge capability
- Clean bounce free switching
- Low power consumption
- SMD lead available on tape and reel
- Compliant to RoHS Directive 2002/95/EC and in accordance to WEEE 2002/96/EC



RoHS COMPLIANT

APPLICATIONS

- General telecom switching
 - On/off hook control
 - Ring delay
 - Dial pulse
 - Ground start
 - Ground fault protection
- Instrumentation
- Industrial controls

AGENCY APPROVALS

UL1577: file no. E52744 system code H, double protection
 CSA: certification 093751
 DIN EN: 60747-5-2 (VDE 0884)/60747-5-5 (pending), available with option 1
 FIMKO: 25419

| ORDERING INFORMATION | | | | | | | | | | | | |
|----------------------|---|---|---|---|---|-----------------------|-----------------|---------------|---|---|---------|----------|
| L | H | 1 | 5 | 0 | 2 | B | # | # | T | R | | |
| PART NUMBER | | | | | | ELECTR. VARIATION | PACKAGE CONFIG. | TAPE AND REEL | | | 7.62 mm | > 0.1 mm |
| PACKAGE | | | | | | UL, CSA, FIMKO | | | | | | |
| SMD-8, tubes | | | | | | LH1502BAC | | | | | | |
| SMD-8, tape and reel | | | | | | LH1502BACTR | | | | | | |
| DIP-8, tubes | | | | | | LH1502BB | | | | | | |



| ABSOLUTE MAXIMUM RATINGS (T _{amb} = 25 °C, unless otherwise specified) | | | | |
|---|--|-------------------|---------------|------------------|
| PARAMETER | TEST CONDITION | SYMBOL | VALUE | UNIT |
| INPUT | | | | |
| LED continuous forward current | | I _F | 50 | mA |
| LED reverse voltage | I _R ≤ 10 μA | V _R | 8 | V |
| OUTPUT | | | | |
| DC or peak AC load voltage | I _L ≤ 50 μA | V _L | 350 | V |
| Continuous DC load current (form C operation) | | I _L | 150 | mA |
| Peak load current, form A | t = 100 ms | I _P | (3) | |
| Peak load current (single shot), form B | | I _P | 350 | mA |
| SSR | | | | |
| Ambient operating temperature range | | T _{amb} | - 40 to + 85 | °C |
| Storage temperature range | | T _{stg} | - 40 to + 125 | °C |
| Pin soldering temperature (1) | t = 10 s max. | T _{sld} | 260 | °C |
| Input to output isolation test voltage | t = 1 s, I _{ISO} = 10 μA max. | V _{ISO} | 3750 | V _{RMS} |
| Pole-to-pole isolation voltage (S1 to S2) (2), (dry air, dust free, at sea level) | | | 1600 | V |
| Output power dissipation (continuous) | | P _{diss} | 600 | mW |

Notes

- Stresses in excess of the absolute maximum ratings can cause permanent damage to the device. Functional operation of the device is not implied at these or any other conditions in excess of those given in the operational sections of this document. Exposure to absolute maximum ratings for extended periods of the time can adversely affect reliability.
- (1) Refer to reflow profile for soldering conditions for surface mounted devices (SMD). Refer to wave profile for soldering conditions for through hole devices (DIP).
- (2) Breakdown occurs between the output pins external to the package.
- (3) Refer to current limit performance application note for a discussion on relay operation during transient currents.

| ELECTRICAL CHARACTERISTICS (T _{amb} = 25 °C, unless otherwise specified) | | | | | | |
|---|--|-------------------|------|------|------|------|
| PARAMETER | TEST CONDITION | SYMBOL | MIN. | TYP. | MAX. | UNIT |
| INPUT | | | | | | |
| LED forward current, switch turn-on (NO) | I _L = 100 mA, t = 10 ms | I _{Fon} | | 0.6 | 2 | mA |
| LED forward current, switch turn-off (NO) | V _L = ± 300 V | I _{Foff} | 0.4 | 0.5 | | mA |
| LED forward current, switch turn-on (NC) | I _L = 300 mA, t = 10 ms | I _{Fon} | 0.2 | 0.9 | | mA |
| LED forward current, switch turn-off (NC) | V _L = ± 300 V | I _{Foff} | | 1 | 2 | mA |
| LED forward voltage | I _F = 10 mA | V _F | 1.15 | 1.26 | 1.45 | V |
| OUTPUT | | | | | | |
| On-resistance (NO, NC) | I _F = 5 mA (NO), I _F = 0 mA (NC), I _L = 50 mA (NC) | R _{ON} | 12 | 20 | 25 | Ω |
| Off-resistance (NO) | I _F = 0 mA, V _L = ± 100 V | R _{OFF} | 0.35 | 5000 | | GΩ |
| Off-resistance (NC) | I _F = 5 mA, V _L = ± 100 V | R _{OFF} | 0.1 | 1.4 | | GΩ |
| Current limit (NO) | I _F = 5 mA, t = 5 ms, V _L = ± 5 V | I _{LMT} | 270 | 290 | 380 | mA |
| Off-state leakage current (NO) | I _F = 0 mA, V _L = ± 100 V | I _O | | 0.02 | 1000 | nA |
| Off-state leakage current (NC) | I _F = 5 mA, V _L = ± 100 V | I _O | | 0.07 | 1 | μA |
| Off-state leakage current (NO, NC) | I _F = 0 mA (NO), I _F = 5 mA (NC), V _L = ± 200 V | I _O | | | 1 | μA |
| Output capacitance (NO) | I _F = 0 mA, V _L = 50 V | C _O | | 50 | | pF |
| Output capacitance (NC) | I _F = 5 mA, V _L = 50 V | C _O | | 50 | | pF |
| TRANSFER | | | | | | |
| Capacitance (input to output) | V _{ISO} = 1 V | C _{IO} | | 3 | | pF |

Note

- Minimum and maximum values are testing requirements. Typical values are characteristics of the device and are the result of engineering evaluation. Typical values are for information only and are not part of the testing requirements.



| SWITCHING CHARACTERISTICS ($T_{amb} = 25\text{ }^{\circ}\text{C}$, unless otherwise specified) | | | | | | |
|--|---|-----------|------|------|------|------|
| PARAMETER | TEST CONDITION | SYMBOL | MIN. | TYP. | MAX. | UNIT |
| transfer | | | | | | |
| Turn-on time (NO) | $I_F = 10\text{ mA}$, $I_L = 37.5\text{ mA}$, $V_L = 150\text{ V}$ | t_{on} | 0.2 | 3.2 | 6 | ms |
| Turn-on time (NC) | $I_F = 10\text{ mA}$, $I_L = 37.5\text{ mA}$, $V_L = 150\text{ V}$ | t_{on} | 0.2 | 3.8 | 6 | ms |
| Turn-off time (NO) | $I_F = 10\text{ mA}$, $I_L = 37.5\text{ mA}$, $V_L = 150\text{ V}$ | t_{off} | | 1.6 | 3 | ms |
| Turn-off time (NC) | $I_F = 10\text{ mA}$, $I_L = 37.5\text{ mA}$, $V_L = 150\text{ V}$ | t_{off} | | 0.8 | 3 | ms |

TYPICAL CHARACTERISTICS ($T_{amb} = 25\text{ }^{\circ}\text{C}$, unless otherwise specified)

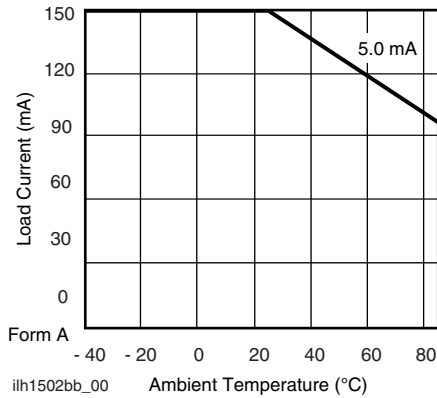


Fig. 1 - Recommended Operating Conditions

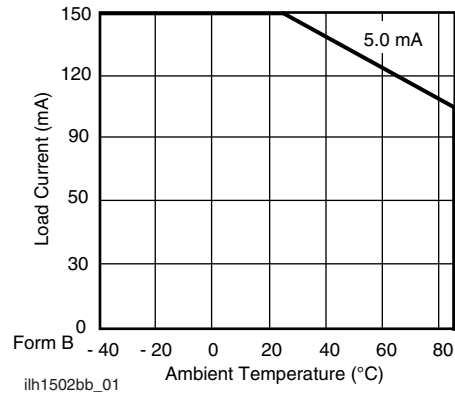
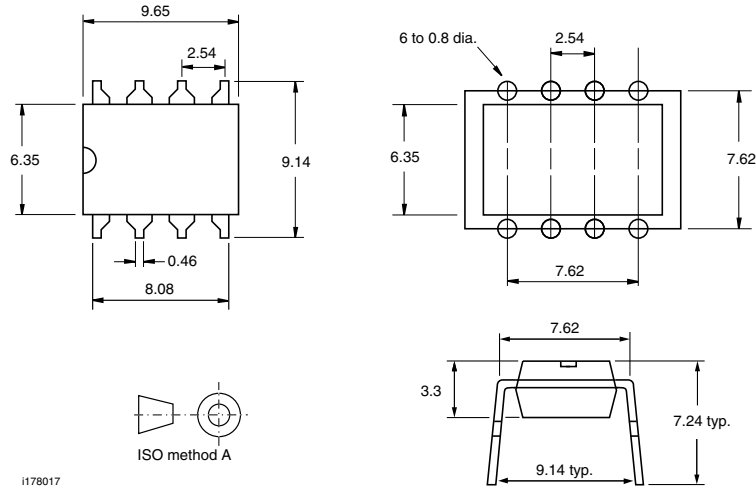


Fig. 2 - Recommended Operating Conditions

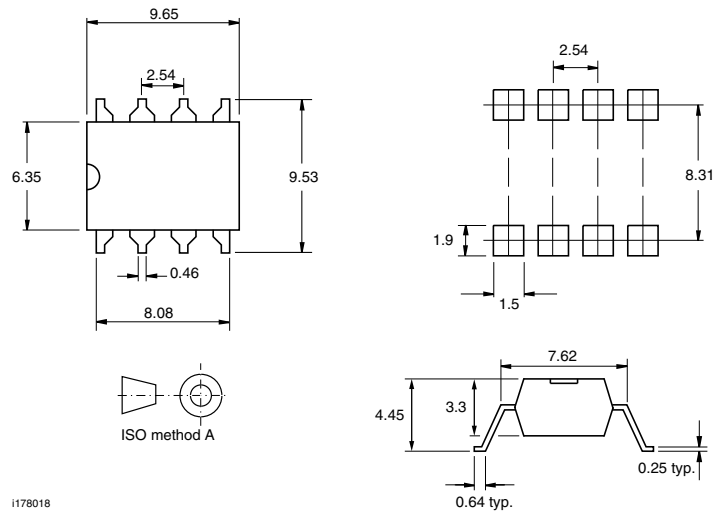


PACKAGE DIMENSIONS in millimeters

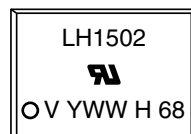
DIP



SMD



PACKAGE MARKING (example)



Note

- Tape and reel suffix (TR) is not part of the package marking.



Disclaimer

ALL PRODUCT, PRODUCT SPECIFICATIONS AND DATA ARE SUBJECT TO CHANGE WITHOUT NOTICE TO IMPROVE RELIABILITY, FUNCTION OR DESIGN OR OTHERWISE.

Vishay Intertechnology, Inc., its affiliates, agents, and employees, and all persons acting on its or their behalf (collectively, "Vishay"), disclaim any and all liability for any errors, inaccuracies or incompleteness contained in any datasheet or in any other disclosure relating to any product.

Vishay makes no warranty, representation or guarantee regarding the suitability of the products for any particular purpose or the continuing production of any product. To the maximum extent permitted by applicable law, Vishay disclaims (i) any and all liability arising out of the application or use of any product, (ii) any and all liability, including without limitation special, consequential or incidental damages, and (iii) any and all implied warranties, including warranties of fitness for particular purpose, non-infringement and merchantability.

Statements regarding the suitability of products for certain types of applications are based on Vishay's knowledge of typical requirements that are often placed on Vishay products in generic applications. Such statements are not binding statements about the suitability of products for a particular application. It is the customer's responsibility to validate that a particular product with the properties described in the product specification is suitable for use in a particular application. Parameters provided in datasheets and / or specifications may vary in different applications and performance may vary over time. All operating parameters, including typical parameters, must be validated for each customer application by the customer's technical experts. Product specifications do not expand or otherwise modify Vishay's terms and conditions of purchase, including but not limited to the warranty expressed therein.

Except as expressly indicated in writing, Vishay products are not designed for use in medical, life-saving, or life-sustaining applications or for any other application in which the failure of the Vishay product could result in personal injury or death. Customers using or selling Vishay products not expressly indicated for use in such applications do so at their own risk. Please contact authorized Vishay personnel to obtain written terms and conditions regarding products designed for such applications.

No license, express or implied, by estoppel or otherwise, to any intellectual property rights is granted by this document or by any conduct of Vishay. Product names and markings noted herein may be trademarks of their respective owners.